

This document provides a brief kit introduction and instructions to install and run the LatticeECP2M™ PCIe Basic demo on Windows. Please refer to the User's Guide for more details on this demo and others included with the kit. Linux users should refer to the User's Guide for installation and demo operation.

1 Check Kit Contents

The LatticeECP2M development kit should contain the following items shown below. Check contents against the complete item list in Chapter 2 of the User's Guide. In addition to the contents of the kit, you will need a PC with Windows® 2000 or XP (see kit User's Guide for Linux requirements).



2 Install Development Kit (Windows)

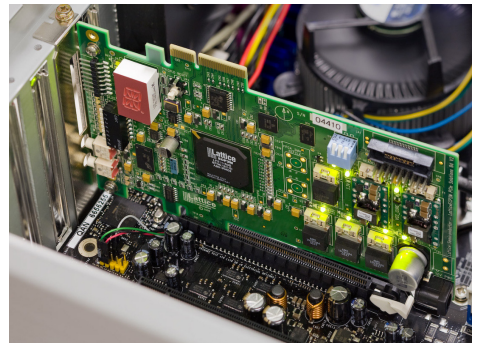
Load the CD-ROM labeled *LatticeECP2M PCI Express Development Kit (Windows Version)* and execute setup.exe. It is not necessary to install the ispLEVER® design tools at this time.

Note: If you are using a Linux-based system see the User's Guide for Linux installation instructions.

3 Install the PCI Express Solutions Board

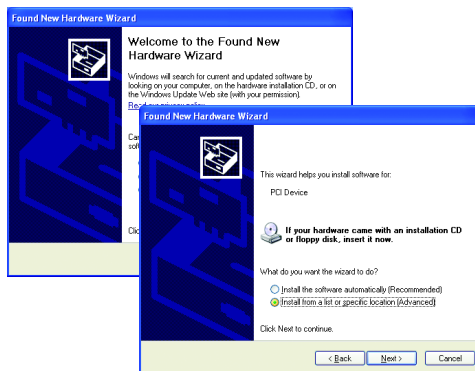
Switch off power to your PC and install the PCIe board using the x1 connector into a PCI Express slot. The board is shipped with its bracket installed for x1 operation.

Note: The ispVM™ cable does not have to be connected to the board for the demo. Ensure that the board is not connected to any external power supply. The board can be installed in any PCIe slot of the same or greater width than the board.



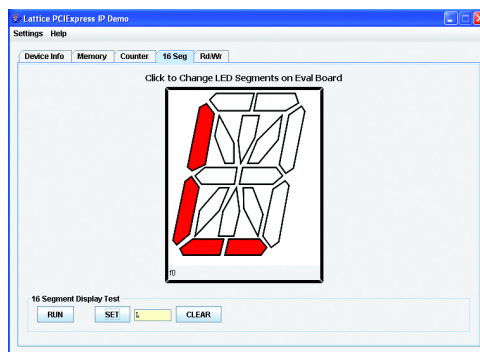
4 Install Hardware Drivers

Switch on power to the PC. A Found New Hardware popup is displayed if the board is recognized by Windows (refer to the User's Guide Troubleshooting section if this window does not appear). Choose the install from the specific location option. The default install location is C:\Lattice_DevKits\DK-ECP2M-PCIE-011\Demonstration\PCIeBasic\Driver. Check that the driver is installed correctly using Device Manager (Control Panel > System > Hardware).



5 Run the PCIe Basic Demo Application

To run the PCIe Basic demo from the desktop, click Start > Programs > DK-ECP2M-PCIE-011 > PCIe Basic Demo. The 16 Segment Control Page in the demo allows interactive control of the 16-segment LED display on the board. Memory and Read/Write Pages allow you to access to FPGA memory over the PCIe bus. Refer to Chapter 4 in the kit User's Guide for details on running the PCI Express Basic demo and application features.



6 What's Next?

Congratulations! You have successfully installed and accessed the LatticeECP2M on a PCI Express bus. Please refer to the kit User's Guide for the following:

- Details on solutions board features and operation
- Running the PCIe Throughput and DMA demos
- Modifying and generating the demo bitstreams from the ispLEVER project sources
- Modifying and generating the demo software drivers from the provided source code

Technical Support

If you experience problems running the kit demos please refer to the Troubleshooting appendix in the User's Guide. If problems persist or if any kit contents are missing, please email us at techsupport@latticesemi.com or call 1-800-528-8423 (USA) or +1 503-268-8001 (other locations). The part number for this guide is DK PCIe ECP2M QUICK START GUIDE.